

Connecting to the Internet



Connecting to the Internet - What is a Wireless Network??



SAUSD Chromebooks and iPads connect to the Internet using wireless network connections.



A wireless network is used to connect laptops, cell phones and other devices to the Internet.

If you have access to a wireless network at home you will be able to connect SAUSD Chromebooks and iPads.



What is a Hotspot?

A hotspot allows you to connect wirelessly to Chromebooks and iPads. The hotspot has a network name and password that will need to be entered in the device in order for the hotspot to provide Internet access.



[Get Started Hotspot PowerPoint](#)

[Video for Connecting Your Chromebook to WiFi](#)

What do you use to connect to the Internet?



**JAN
2015**

GLOBAL DIGITAL SNAPSHOT

A SNAPSHOT OF THE WORLD'S KEY DIGITAL STATISTICAL INDICATORS

TOTAL
POPULATION



we
are
social

**7.210
BILLION**

URBANISATION: 53%

FIGURE REPRESENTS TOTAL GLOBAL
POPULATION, INCLUDING CHILDREN

ACTIVE
INTERNET USERS



we
are
social

**3.010
BILLION**

PENETRATION: 42%

FIGURE INCLUDES ACCESS VIA
FIXED AND MOBILE CONNECTIONS

ACTIVE SOCIAL
MEDIA ACCOUNTS



we
are
social

**2.078
BILLION**

PENETRATION: 29%

FIGURE REPRESENTS ACTIVE USER
ACCOUNTS, NOT UNIQUE USERS

UNIQUE
MOBILE USERS



we
are
social

**3.649
BILLION**

PENETRATION: 51%

FIGURE REPRESENTS
UNIQUE MOBILE PHONE USERS

ACTIVE MOBILE
SOCIAL ACCOUNTS

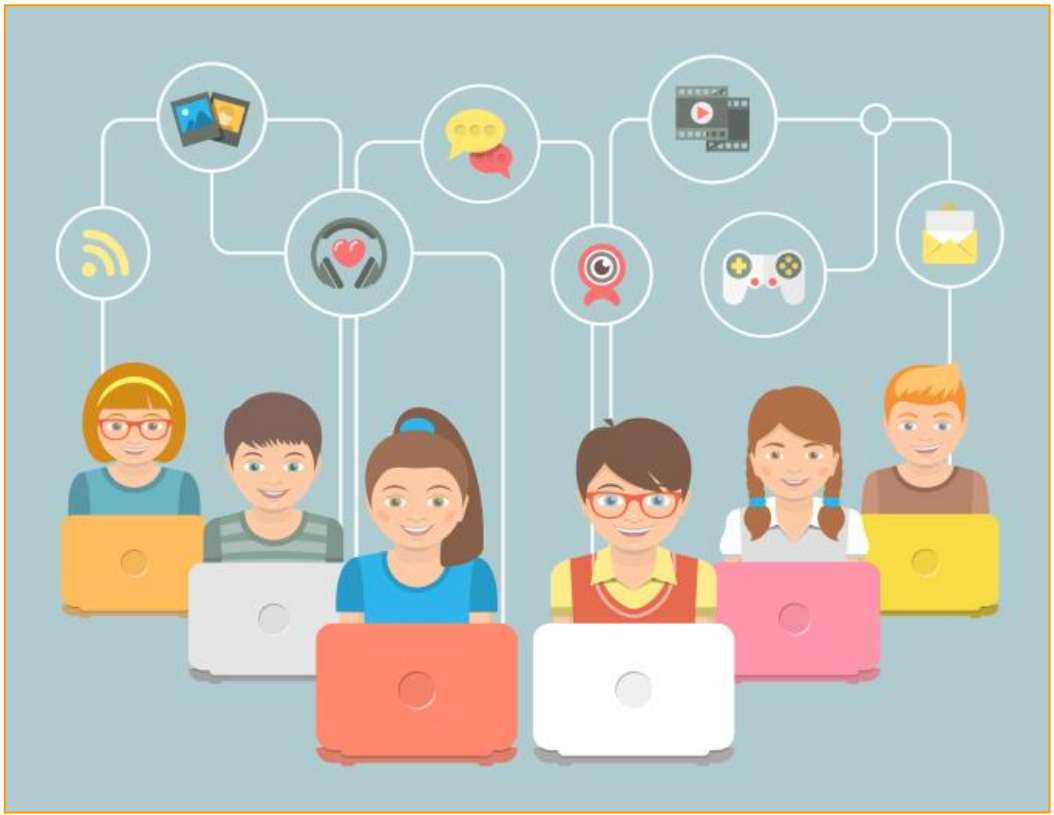


we
are
social

**1.685
BILLION**

PENETRATION: 23%

FIGURE REPRESENTS ACTIVE USER
ACCOUNTS, NOT UNIQUE USERS



Parenting in the Online World

<https://www.common sensemedia.org/latino>



¿Cómo usar la tecnología de forma segura y balanceada?

T H A N K
Y O U